

Training Calendar **CSQ**[®] Analytics

| Commitment | Satisfaction | Quality |

2026

MANAGEMENT SYSTEM TRAINING



NO	CODE	PROGRAMME/COURSE TITLE	DAY	TRAINING TYPE	JAN	FEB	MAR	APR	MAY	JUN	JUL	AUG	SEP	OCT	NOV	DEC
1	PT9001-01	Understanding of ISO 9001:2015 Quality Management System Requirements	1	Public *InHouse	27 (KL)	26 (ROT)		9 (KL)						8 (KL)		
2	PT17025-01-02	Understanding of ISO/IEC 17025:2017 Laboratory Management System Requirements	2	Public *InHouse			10-11 (ROT)	22-23 (KL)						21-22 (KL)		
3	PTHACCP-01	Understanding of Hazard Analysis and Critical Control Point (HACCP) for Food Safety System	1	Public *InHouse	6 (KL)							27 (KL)				
4	PT14001-04	Understanding of ISO 14001:2015 Environmental Management System Requirements	1	Public *InHouse		5 (KL)					30 (KL)					
5	PT22000-01	Understanding of ISO 22000:2018 Food Safety Management System Requirements.	1	Public *InHouse	22 (KL)					9 (KL)						
6	PT45001-01	Understanding of ISO 45001:2018 Occupational Health & Safety Management System Requirements ★	1	Public *InHouse				16 (KL) ★							12 (KL) ★	
7	PTFSSC-01	Understanding of Food Safety System Certification (FSSC) 22000 Requirements.	1	Public *InHouse	29 (KL)										3 (KL)	
8	PT9001-07	Risk Assessment for Quality Management System	1	Public *InHouse			5 (ROT)			4 (KL)				29 (KL)		
9	PT17025-07	Risk Assessment for Laboratory Management System	1	Public *InHouse			17 (ROT)				9 (KL)				26 (KL)	
10	PT14001-01	Environmental Aspect, Impact and Risk Assessment	1	Public *InHouse					14 (KL)					27 (KL)		
11	PT45001-06	Transitioning From HIRAC (Hazard Identification, Risk Assessment And Risk Control) To OSH (Occupational Safety And Health) Risk Management ★	1	Public *InHouse							16 (KL) ★					1 (KL) ★
12	PTFSMS-01	Risk Assessment for Food Safety Management System.	1	Public *InHouse		3 (KL)										10 (KL)
13	PT22000-03-02	Internal Audit for ISO 22000:2018 Food Safety Management System Requirements	2	Public *InHouse		10-11 (KL)						13 (KL)				
14	PT9001-03-02	Internal Audit for ISO 9001:2015 Quality Management System.	2	Public *InHouse						24-25 (KL)						18-19 (KL)
15	PT17025-05-02	Internal Audit for ISO/IEC 17025:2017 Laboratory Management System	2	Public *InHouse					5-6 (KL)							
16	PT14001-03-02	Internal Audit for ISO 14001:2015 Environmental Management System	2	Public *InHouse									29-30 (KL)			
17	PT45001-03-02	Internal Audit for ISO 45001:2018 Occupational Health & Safety Management System	2	Public *InHouse								19-20 (KL)				

KL: KUALA LUMPUR / SELANGOR (FACE TO FACE TRAINING)

NS: NEGERI SEMBILAN (FACE TO FACE TRAINING)

ROT; REMOTE ONLINE TRAINING

★ CPD HOURS BY EIMAS

★ 5 CEP POINTS BY DOSH

*IN-HOUSE TRAINING: DATE TO BE DETERMINED BY CUSTOMER

LIKE & FOLLOW CSQ ANALYTICS SOCIAL MEDIA

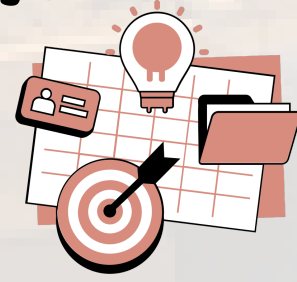


CONTACT US:

CSQ ANALYTICS SDN BHD (956471-X)

No. 929, 929A, 929B, Jalan DS 3/1, Bandar Dataran Segar, 71010 Lukut, Port Dickson, N. Sembilan, Malaysia.
 Tel.: +606 - 651 9118 Fax.: +606 - 651 9117 Email: info@csqanalytics.com Website: www.csqanalytics.com
 | Penang | Perak | Selangor | Kuala Lumpur | Negeri Sembilan | Malacca | Johor | Pahang | Sabah | Sarawak

Training Calendar 2026



TECHNICAL TRAINING

NO	CODE	PROGRAMME/COURSE TITLE	DAY	TRAINING TYPE	JAN	FEB	MAR	APR	MAY	JUN	JUL	AUG	SEP	OCT	NOV	DEC
1	PTChem-01	Chemicals and Chemical Waste Handling, Storage and Disposal. ★★	1	Public *InHouse					20 (KL) ★					6 (KL) ★		
2	PTChem-04	Understanding of Safety Data Sheet (SDS) for Chemicals ★	1	Public *InHouse								6 (KL) ★				
3	PTLab-11	Basic Understanding of Equipment Handling, Calibration and Maintenance	1	Public *InHouse			13 (ROT)				2 (KL)					17 (KL)
4	PTLab-12	Liquid Handling and Safe Use of Glassware	1	Public *InHouse								11 (NS)				
5	PTTech-11	Wastewater Performance Monitoring ★	1	Public *InHouse						30 (NS) ★					24 (NS) ★	
6	PTTech-02-02	Photometry Measurement in Water and Wastewater ★	2	Public *InHouse									8-9 (NS) ★			
7	PT14001-08	Scheduled Wastes Management ★	1	Public *InHouse							23 (KL) ★					15 (KL) ★
8	PTTech-15	Industrial Effluent Treatment Plant and Wastewater Quality ★	1	Public *InHouse				28 (KL) ★						15 (KL) ★		
9	PTLab-02	General QA/QC Procedures for Testing Laboratory	1	Public *InHouse				2 (KL)					24 (KL)			

SOFT SKILL TRAINING

NO	CODE	PROGRAMME/COURSE TITLE	DAY	TRAINING TYPE	JAN	FEB	MAR	APR	MAY	JUN	JUL	AUG	SEP	OCT	NOV	DEC
1	PTH&BCD-44-02	Strategic Marketing and Effective Selling in the competitive markets	2	Public *InHouse	14-15 (KL)											
2	PTH&BCD-45-02	Leadership in the Complex Business Environment	2	Public *InHouse			25-26 (KL)									
3	PTH&BCD-47-02	Influencing and Persuasive Communication Skills	2	Public *InHouse							2-3 (KL)					
4	PTH&BCD-17-02	Effective Problem Solving and Decision Making	2	Public *InHouse									2-3 (KL)			

KL: KUALA LUMPUR / SELANGOR (FACE TO FACE TRAINING)

NS: NEGERI SEMBILAN (FACE TO FACE TRAINING)

ROT: REMOTE ONLINE TRAINING

CPD HOURS BY EIMAS

5 CEP POINTS BY DOSH

*IN-HOUSE TRAINING: DATE TO BE DETERMINED BY CUSTOMER

LIKE & FOLLOW CSQ ANALYTICS SOCIAL MEDIA



SCAN ME



WE DO PROVIDE OTHER TRAINING AND CONSULTATION SERVICES. CONTACT US FOR MORE DETAILS

CONTACT US:

CSQ ANALYTICS SDN BHD (956471-X)

No. 929, 929A, 929B, Jalan DS 3/1, Bandar Dataran Segar, 71010 Lukut, Port Dickson, N. Sembilan, Malaysia.
Tel.: +606 - 651 9118 Fax.: +606 - 651 9117 Email: info@csqanalytics.com Website: www.csqanalytics.com
| Penang | Perak | Selangor | Kuala Lumpur | Negeri Sembilan | Malacca | Johor | Pahang | Sabah | Sarawak